



OptiTex release

Version 11

Protection management

User Guide



OptiTex Suite 11™ Protection

Table of Contents

1	INTRODUCTION	3
1.1	FUNCTIONALITIES	3
2	SOFTWARE ACTIVATION REGULAR / TIMER DONGLES	4
2.1	FIRST INSTALLATION ON CUSTOMER'S SITE.....	4
2.2	LICENSE FILE UPGRADE	5
2.3	REMOVE LICENSE FILE	5
2.4	SRM NETWORK DONGLE	5
3.	SOFTWARE PROTECTION FOR OPTITEX MULTIPLE VERSIONS	6

1 Introduction

OptiTex Software protection relies upon a secured license file and an Aladdin dongle [Plug / Key], for sites using local or timer dongles.

This guide introduces the customers' actions required to install a license file on the customer site.

1.1 Functionalities

OptiTex processes are designed as a set of modules; a module can be

A process, such as a Converter, PDS, Marker, ...

A functionality within one or several processes, such as Import, Export

From the release of v10, the customer receives a secured license file (RSA encryption algorithm), based upon a license request generated by the customer and sent to OptiTex: this license file includes the customer modules' profile (including hardware characteristics) and can be installed only on the site having provided the "license request".

When not any license file is installed on a customer site, OptiTex software, including the license manager, take into account the modules' configured on the Aladdin dongle.

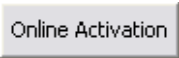
The OptiTex software does not take into consideration the license file when a Network or Timer dongle is connected on the site.

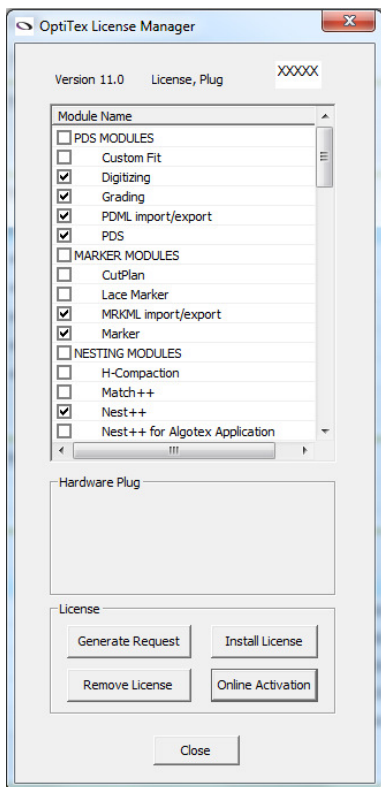
2 Software Activation Regular / Timer dongles

After installing OptiTex software, you will be required to activate it using the following procedure. The same procedure is needed if you have formatted your computer, and reinstalled OptiTex.

This procedure refers to **Version 11** installed on computers with **Internet Connectivity**.

2.1 First installation on customer's site

- Plug the Dongle in one of your available USB ports. Make sure the red light is on.
- Launch the license Manager through: Windows Start> Program Files> OptiTex 11> Utilities> License Manager
- Click the button Online Activation  found on the bottom of the [License Manager window](#)
- A Warning box will appear informing you that the process may take a minute, click OK to proceed.
- A dialog box will pop to inform you the License installed successfully.



2.2 License file upgrade

If the customer needs to add/ remove some modules, the procedure is

- Request OptiTex support for the necessary changes.
- Use the Online Activation procedure as listed above.

2.3 Remove license file

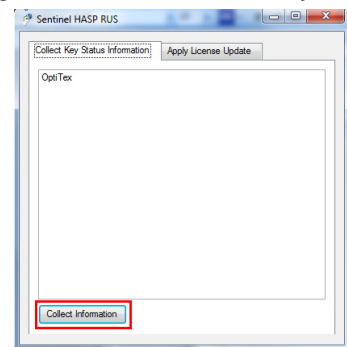
The “Remove license” feature uninstalls the installed license file and from then module settings are accessed from the dongle.

2.4 SRM Network dongle

The activation of SRM network dongle is done by license file.

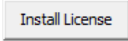
(Remember: This process must be done AFTER the installation of OptiTex Software – This procedure MUST be done on the computer with the DONGLE plugged on it, it will not work if you proceed from a different computer)

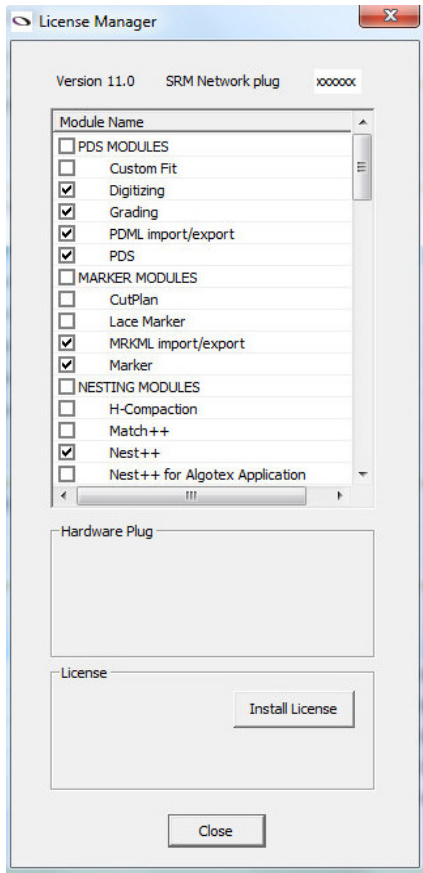
- Connect the dongle into an available USB port and wait till the RED led is ON
- Go to Start → All Programs → OptiTex11 → Utilities → OptiTexHaspRUS
- Click on "Collect Information"
- You will be prompted to a Save File window. Please, use your dongle number as your file name, (e.g. If your dongle number is 27887, save your file name as 27887. Save your file onto the desktop. The file name will be then “27887.c2v”
- Close the application, send the file to OptiTex by [email \(license.int@optitex.com\)](mailto:license.int@optitex.com) and wait for OptiTex’s reply.



** Please generate the file only once, if by mistake you created two files, send them both to OptiTex, clearly stating which file was created first.*

The reply email will have an attached file with your dongle number as name and the extension “.v2c”.

- Save the file onto your desktop.
- Open the OptiTex License Manager, you can do so through the Start Menu or when opening any OptiTex application.
- Click on 
- At the end of the installation you will see the modules that are now open for your use:



There is no need for any further installation besides the software on each computer.

3. Software protection for OptiTex multiple versions

As long as license file is installed, OptiTex v11/10 protection is controlled through the license file configuration.

If a user runs on the same station Release v11/10 and a previous Release, such as release v9, the following protection configurations are supported

- Configured Aladdin Dongle version 11/10 and no license file installed
 - Protection for processes, for all releases, is controlled based upon the Aladdin Dongle modules' configuration
- Configured Aladdin Dongle release v9 or v11/10 version and license file installed
 - Protection for release v11/10 is controlled based upon the license file
 - Protection for release v9 is controlled based upon the Aladdin Dongle modules' configuration